



Portal Integration

What Works at Plymouth State University
IUG 2005 – San Francisco

Elaine S. Allard, Systems Librarian
Casey Bisson, Library Systems
Plymouth State University
Lamson Library

○ ● ● Building on past work

- The library's involvement with the campus portal began during the early stages of considering portal vendors in 2000 and 2001
- The portal went live in Summer 2002 and we presented our work at IUG 2003 in San Jose.

○ ● ● What can it do?

- Once in the portal, patrons have access to a number of resources without being asked for authentication information
 - Access to WAM-proxied databases is transparent, just click the link!
 - MyMillennium features, like self-service access to the patron record and renewing books is easy too!
- Contact information is pre-loaded in ILL forms, and the portal is used to authenticate patron status before the request can be submitted

○ ● ● What's new?

- Changed student information systems (now Banner)
- Changed portal platform (Web Platform to Luminis)
- Billing integration
- Implementation of "roles"
- Awareness of identity management as a barrier to further progress

○ ● ● Identity management?

- A way of authenticating a patron and asserting that authentication info to other systems
- A way of sharing information about who the patron is and what he or she can do (or, what groups/roles the patron is part of)

Roles?

- Campus Pipeline's "roles" are similar to Ill's patron type
...but unlike patron type, each user can have multiple roles
- Within the portal, roles can be used target specific content for different types of users



Demo & Walkthrough

Quick Links

[Library Home](#)

Online Resources

[Journal Articles](#)
[Newspaper Articles](#)
[Other Databases](#)
[Course/](#)
[Research Guides](#)
[Library Instruction/](#)
[FYS & IAC](#)
[Theme Year Resources](#)
[Style Guides](#)

Web Sites

[By Subject](#)
[Quick Reference](#)
[Other Libraries](#)

Library

Information

[Hours](#)
[Library Directory](#)
[Interlibrary Loan](#)
[News Archive](#)
[My Account/](#)
[Renew Books](#)

For more features, log-in to the library website using the [myPlymouth](#) portal.

Search LOLA (Library Catalog):

[Advanced Search](#)



What's New:



Go Green! Information on sustainability and other environmental issues.

Check out our free trials to eHRAF collections in [Ethnography](#) and [Archaeology](#)

New Titles added February 1st - February 28th

Earlier news is available in our [news archive](#).

Lamson Library Celebrates National Library Week

Celebrate National Library Week at Lamson Library! Activities will take place throughout the week of April 10-16 2005, and there will be gifts, raffles and refreshments!

All week:

- Any time you check out a book or ask a question at one of our three desks (Circulation, Periodicals, or Reference), you will receive a prize!
- Fill out raffle tickets for a \$50 gift certificate to Barnes & Noble Bookstore. Drawing will be held Thursday, April 14th.
- For non-PSU library users, come in and get a library card good for one year for FREE!

Monday April 11

Join the library staff for coffee from 8-10:30am on the Main Level of the library. Fill out raffle tickets for a \$50 gift certificate to Barnes & Noble Bookstore.

Tuesday April 12

The pre-school and kindergarten classes from the PSU Child Development and Family Center have been invited to visit the library for a story hour, snacks, and book activities.

Thursday April 14

Celebrate libraries at a cake and punch reception, 3-4:30pm on the Main Level of the library.

Content/Layout Channel Admin

Welcome Nathaniel C. Bisson You are currently logged in.

e-mail calendar groups admin logout help

Welcome Staff Services Student Services Student Life My Courses Admin Library Help

April 11, 2005

Campus Announcements

Computer Store - Special Dell Deal! Professor Okrant to Sign Newest Novel April 12 PSU Professor discusses Living with ALS More Campus Announcements...

Personal Announcements

Fair Trade Coffee 4/11/05-4/15/05 Support PSU Earth Week 2005 The Impacts of NAFTA More personal announcements...

My Calendar

You have 0 events in your calendar today Campus Calendar and Room Reservation System

Directory Search

Search input field, radio buttons for Students and Faculty and Staff, Search By: Last Name, Search >> button

PSU WebCam and Weather

Weather information: At 10:16 AM EDT (04/11/05), the Plymouth conditions were Temperature: 40.3°F Dewpoint: 12.0°F Relative Humidity: 31% Wind: NNW at 7.0 mph (WebCam is Live from Samuel Read Hall Residence Hall) [Plymouth State Weather Center] Includes a video player showing a campus scene.

Computing Resources

My Drive, Change Password, Help, MyDrive Quota Usage (190 MB / 280 MB), Print Quota Usage (0 Pages / 350 Pages), Technology and Learning Center, Equipment Reservations, Buy Computers, Computing Policies, SPAM Filtering

Bookmarks

- Plymouth State University Homepage PSU Site Index

Campus Announcements

[Computer Store - Special Dell Deal!](#)
[Professor Okrant to Sign Newest Novel April 12](#)
[PSU Professor discusses Living with ALS](#)
[More Campus Announcements...](#)

Personal Announcements

[Fair Trade Coffee 4/11/05-4/15/05](#)
[Support PSU Earth Week 2005](#)
[The Impacts of NAFTA](#)
[More personal announcements...](#)

My Calendar

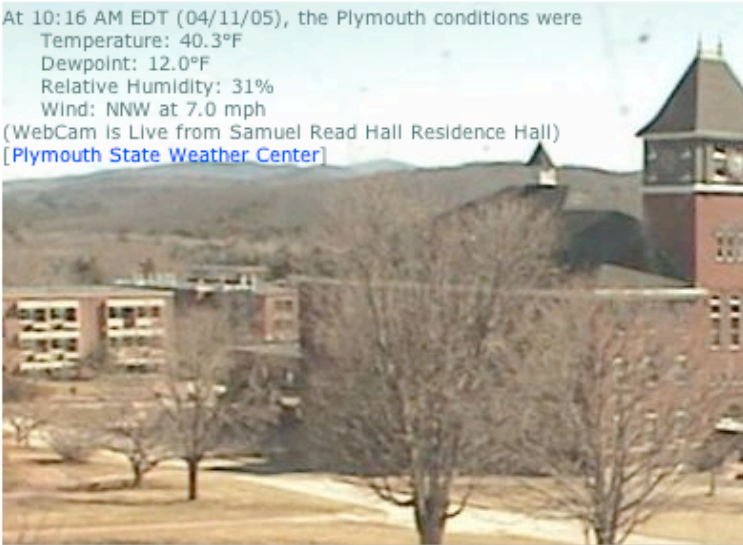
You have 0 events in your calendar today
[Campus Calendar and Room Reservation System](#)

Directory Search

Students Search By:
 Faculty and Staff

PSU WebCam and Weather

At 10:16 AM EDT (04/11/05), the Plymouth conditions were
Temperature: 40.3°F
Dewpoint: 12.0°F
Relative Humidity: 31%
Wind: NNW at 7.0 mph
(WebCam is Live from Samuel Read Hall Residence Hall)
[\[Plymouth State Weather Center\]](#)



Computing Resources

[My Drive](#) [Change Password](#)
[Help](#)
MyDrive Quota Usage
190 MB / 280 MB
Print Quota Usage
0 Pages / 350 Pages
[Technology and Learning Center](#)
[Equipment Reservations](#)
[Buy Computers](#)
[Computing Policies](#)
[SPAM Filtering](#)

Bookmarks

- [Plymouth State University Homepage](#)
- [PSU Site Index](#)

Tab appears based on role

Campus Announcements

Computer Store - Special Dell Deal!
Professor Okrant to Sign Newest Novel April 12
PSU Professor discusses Living with ALS
More Campus Announcements...

Personal Announcements

Fair Trade Coffee 4/11/05-4/15/05
Support PSU Earth Week 2005
The Impacts of NAFTA
More personal announcements...

My Calendar

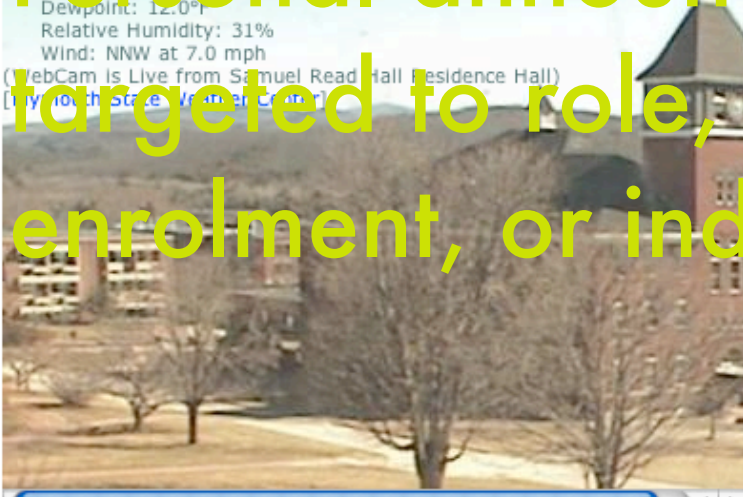
You have 0 events in your calendar today
Campus Calendar and Room Reservation System

Directory Search

Search By: Last Name
Students Faculty and Staff
Search >>

PSU WebCam and Weather

At 10:15 AM EDT (04/11/05), the Plymouth conditions were:
Temperature: 44.3°
Dewpoint: 12.0°
Relative Humidity: 31%
Wind: NNW at 7.0 mph
(WebCam is Live from Samuel Read Hall Residence Hall)
(Plymouth State Weather Center)



Computing Resources

My Drive Change Password
MyDrive Quota Usage: 190 MB / 280 MB
Print Quota Usage: 0 Pages / 350 Pages
Technology and Learning Center
Education Reservations
Buy Computers
Computing Policies
SPAM Filtering

Bookmarks

- Plymouth State University Homepage
- PSU Site Index

Personal announcements targeted to role, class enrolment, or individual user

Quick Links[Library Home](#)**Online Resources**[Journal Articles](#)[Newspaper Articles](#)[Other Databases](#)[Course/](#)[Research Guides](#)[Library Instruction/](#)[FYS & IAC](#)[Theme Year Resources](#)[Style Guides](#)**Web Sites**[By Subject](#)[Quick Reference](#)[Other Libraries](#)**Library****Information**[Hours](#)[Library Directory](#)[Interlibrary Loan](#)[News Archive](#)[My Account/](#)[Renew Books](#)**Intranet**[Room Schedule](#)[Web Site Statistics](#)[Billing Admin](#)**Edit Tools**

Authenticated as

Search LOLA (Library Catalog):

[Advanced Search](#)**What's New:**

Go Green! Information on sustainability and other environmental issues.

Check out our free trials to eHRAF collections in [Ethnography](#) and [Archaeology](#)

New Titles added February 1st - February 28th

Earlier news is available in our [news archive](#).

Lamson Library Celebrates National Library Week

Celebrate National Library Week at Lamson Library! Activities will take place throughout the week of April 10-16 2005, and there will be gifts, raffles and refreshments!

All week:

- Any time you check out a book or ask a question at one of our three desks (Circulation, Periodicals, or Reference), you will receive a prize!
- Fill out raffle tickets for a \$50 gift certificate to Barnes & Noble Bookstore. Drawing will be held Thursday, April 14th.
- For non-PSU library users, come in and get a library card good for one year for FREE!

Monday April 11

Join the library staff for coffee from 8-10:30am on the Main Level of the library. Fill out raffle tickets for a \$50 gift certificate to Barnes & Noble Bookstore.

Quick Links[Library Home](#)**Online Resources**[Journal Articles](#)[Newspaper Articles](#)[Other Databases](#)[Course/](#)[Research Guides](#)[Library Instruction/
FYS & IAC](#)[Theme Year Resources](#)[Style Guides](#)**Web Sites**[By Subject](#)[Quick Reference](#)[Other Libraries](#)**Library****Information**[Hours](#)[Library Directory](#)[Interlibrary Loan](#)[News Archive](#)[My Account/
Renew Books](#)**Intranet**[Room Schedule](#)[Web Site Statistics](#)[Billing Admin](#)**Edit Tools**

Authenticated as

Search LOLA (Library Catalog):

Entire Collection

Select Search Type:

[Advanced Search](#)

Search

Help

Online Resources[Journal Articles:](#)[Newspaper Articles:](#)[Other Databases:](#)**Journal Title Search -**▪ [AtoZ List](#)

A complete list of journals, magazines and newspapers available to Plymouth State students, faculty and staff online and in the library.

- Searchable list of titles held or licensed by Lamson Library
- Includes direct links

↑ **Journal Articles::**

Click on database name to search.

[EBSCOhost](#) includes: (click EBSCOhost to search more than one of the EBSCO databases.)

- [Academic Search Premier](#) (many full-text) START HERE! Largest. All subjects. [[INFO](#)]
- [American Humanities Index](#) (many full-text) [[INFO](#)]
- **NEW!** [BasicBIOSIS](#) (links to full-text) [[INFO](#)]
- [Business Source Premier](#) (many full-text) [[INFO](#)]
- [Clinical Pharmacology](#) [[INFO](#)]
- [Communication & Mass Media Complete](#) (many full-text) [[INFO](#)]
- [EBSCO Animals](#)(all full-text) [[INFO](#)]
- [ERIC](#) (links to full-text) [[INFO](#)]
- [Funk & Wagnalls New World Encyclopedia](#) [[INFO](#)]
- [Health Source: Nursing/Academic](#) (many full-text) [[INFO](#)]
- **NEW!** [Library Literature & Information Science](#) (links to full-text) [[INFO](#)]
- [MAS Ultra--School Edition](#)(for high schools; many full-text) [[INFO](#)]
- [MEDLINE](#) (links to full-text)[[INFO](#)]

Authenticating portal user for off-campus access to restricted databases. Please wait....



[Click here if not redirected within a few seconds.](#)



Research Databases

[New Search](#) | [View Folder](#) | [Preferences](#) | [Help](#)

Sign In to My EBSCOhost

[Basic Search](#)
[Advanced Search](#)
[Choose Databases](#)

[Keyword](#)
[Major Concepts](#)
[Indexes](#)

Database: BasicBIOSIS

[Database Help](#)

Find: in

and in

and in

[Search Tips](#)

[Folder is empty.](#)

[Refine Search](#) [Search History / Alerts](#) [Results](#)

Limit your results:

[Limiters](#) | [Expanders](#)

Linked Full Text

Published Date Yr: to Yr:

Journal Name

Publication Type

- All
- Annual Report
- Article
- Biography

Document Type

- All
- Abstracts Only
- Bibliography
- Biography

All

Content/Layout Channel Admin

Welcome Nathaniel C. Bisson
You are currently logged in.

e-mail calendar groups admin logout help

Welcome Staff Services Student Services Student Life My Courses Admin Library Help

April 11, 2005

> [Lamson Library](#) > [Your Account](#)

April 11, 2005, 10:40 am

Quick Links

- [Library Home](#)
- Online Resources**
- [Journal Articles](#)
- [Newspaper Articles](#)
- [Other Databases](#)
- [Course/ Research Guides](#)
- [Library Instruction/ FYS & IAC](#)
- [Theme Year Resources](#)
- [Style Guides](#)

Web Sites

- [By Subject](#)
- [Quick Reference](#)
- [Other Libraries](#)

Library Information

- [Hours](#)
- [Library Directory](#)
- [Interlibrary Loan](#)
- [News Archive](#)
- [My Account/ Renew Books](#)

Intranet

- [Room Schedule](#)
- [Web Site Statistics](#)
- [Billing Admin](#)

Edit Tools

Authenticated as

Search LOLA (Library Catalog):

Entire Collection

Select Search Type:

Search

Help

[Advanced Search](#)

PRINT

Your library account:

[2 requests \(holds\).](#)

[1 item currently checked out](#)

[Billing History](#)

My Record

Bisson, Nathaniel

2 requests (holds).

SORT BY DUE DATE

RENEW ALL

RENEW SELECTED ITEMS

ITEMS CHECKED OUT			
RENEW	TITLE	STATUS	CALL NUMBER
<input type="checkbox"/>	U.S. 40: cross section of the Un	DUE 04-12-05	E169 .S85

Plymouth State University, 17 High Street, Plymouth, NH 03264-1595

University System of New Hampshire This page was last revised: 4/4/2005 2004-2005 All rights reserved.

The Adobe Acrobat PDF Viewer for your web browser can be downloaded from <http://www.adobe.com/>

Powered by Innovative Interfaces, Inc. 2003

Quick Links

- [Library Home](#)
- Online Resources**
- [Journal Articles](#)
- [Newspaper Articles](#)
- [Other Databases](#)
- [Course/Research Guides](#)
- [Library Instruction/ FYS & IAC](#)
- [Theme Year Resources](#)
- [Style Guides](#)
- Web Sites**
- [By Subject](#)
- [Quick Reference](#)
- [Other Libraries](#)

Library Information

- [Hours](#)
- [Library Directory](#)
- [Interlibrary Loan](#)
- [News Archive](#)
- [My Account/ Renew Books](#)

Intranet

- [Room Schedule](#)
- [Web Site Statistics](#)
- [Billing Admin](#)

Edit Tools

Authenticated as

Search LOLA (Library Catalog):

Entire Collection

Select Search Type:

Search

Help

[Advanced Search](#)

Billing History



Most recent charges and refunds displayed at the bottom of the screen; does not reflect payments made to the bursar's office.

Please also check your bill in Banner Self Service.

2005-01-25 00:00:00	805	Picturing the bomb : photographs from the secret w...	LOST	\$22.45
		Barcode: 30109003433052	Call Number: QC773.A1+F47+1995	
2005-02-01 16:02:28	805	INVOICE 2005-02-01 16:02:28	Replacement Costs	\$22.45
2005-02-02 00:00:00	992	Picturing the bomb : photographs from the secret w...	LOST	-\$22.45
		Barcode: 30109003433052	Call Number: QC773.A1+F47+1995	
2005-02-03 14:46:26	992	INVOICE 2005-02-03 14:46:26	Replacement Costs	-\$22.45

Quick Links

- [Library Home](#)
- Online Resources**
 - [Journal Articles](#)
 - [Newspaper Articles](#)
 - [Other Databases](#)
 - [Course/Research Guides](#)
 - [Library Instruction/FYS & IAC](#)
 - [Theme Year Resources](#)
 - [Style Guides](#)
- Web Sites**
 - [By Subject](#)
 - [Quick Reference](#)
 - [Other Libraries](#)

Library Information

- [Hours](#)
- [Library Directory](#)
- [Interlibrary Loan](#)
- [News Archive](#)
- [My Account/Renew Books](#)

Intranet

- [Room Schedule](#)
- [Web Site Statistics](#)
- [Billing Admin](#)

Edit Tools

Authenticated as

Search LOLA (Library Catalog):

Entire Collection

Select Search Type:

Search Help

[Advanced Search](#)

ILL Request for Books



Fields in red are required.

Patron Information

Name:

Status:

Address:

Phone Number:

Email:

Item Information

Title:

Author:

Publisher:

Place of publication:

Publication date:

> [Lamson Library](#)

April 11, 2005, 10:22 am

Quick Links

- [Library Home](#)
- Online Resources**
- [Journal Articles](#)
- [Newspaper Articles](#)
- [Other Databases](#)
- [Course/Research Guides](#)
- [Library Instruction/FYS & IAC](#)
- [Theme Year Resources](#)
- [Style Guides](#)

- Web Sites**
- [By Subject](#)
- [Quick Reference](#)
- [Other Libraries](#)

Library Information

- [Hours](#)
- [Library Directory](#)
- [Interlibrary Loan](#)
- [News Archive](#)
- [My New Books](#)

- Intranet**
- [Room Schedule](#)
- [Web Site Statistics](#)
- [Billing Admin](#)

- Edit Tools**
- Authenticated as

Search LOLA (Library Catalog):

Entire Collection

Select Search Type:

Search input field

Search

Help

[Advanced Search](#)



What's New:



[Go Green!](#) Information on sustainability and other environmental issues.

Check out our free trials to eHRAF collections in [Ethnography](#) and [Archaeology](#)

[New Titles](#) added February 1st - February 28th

Earlier news is available in our [news archive](#).

Lamson Library Celebrates National Library Week

Celebrate National Library Week at Lamson Library! Activities will take place throughout the week of April 10-16 2005, and there will be gifts, raffles and refreshments!

All week:

- Any time you check out a book or ask a question at one of our front desks (Circulation, Periodicals, or Reference), you will receive a prize!
- Fill out raffle tickets for a \$50 gift certificate to Barnes & Noble Bookstore. Drawing will be held Thursday, April 14th.
- For non-PSU library users, come in and get a library card good for one year for FREE!

Monday April 11

Join the library staff for coffee from 8-10:30am on the Main Level of the library. Fill out raffle tickets for a \$50 gift certificate to Barnes & Noble Bookstore.

Certain features available only to staff, based on username

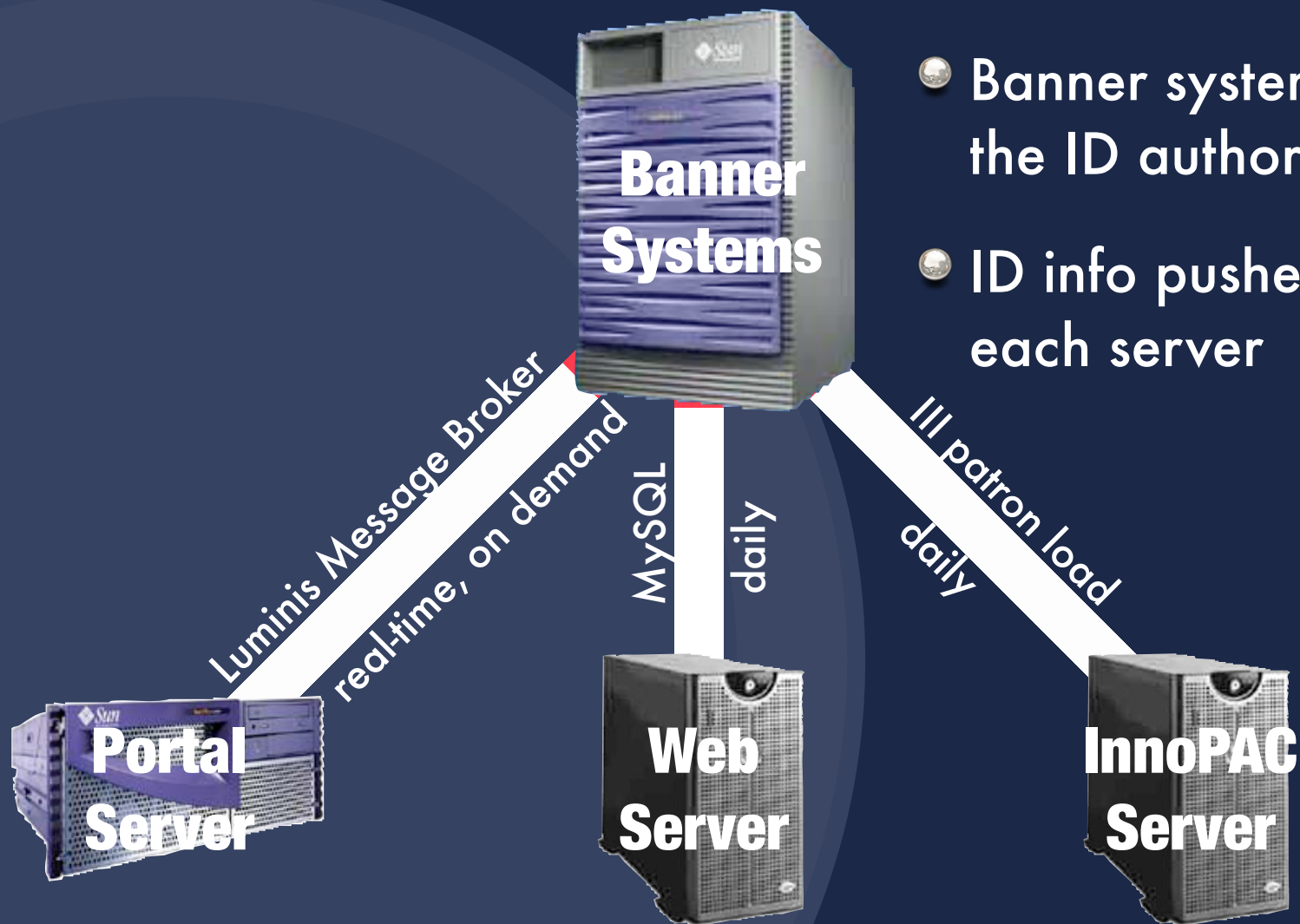


Single Sign-On Details

○ ● ● Details details

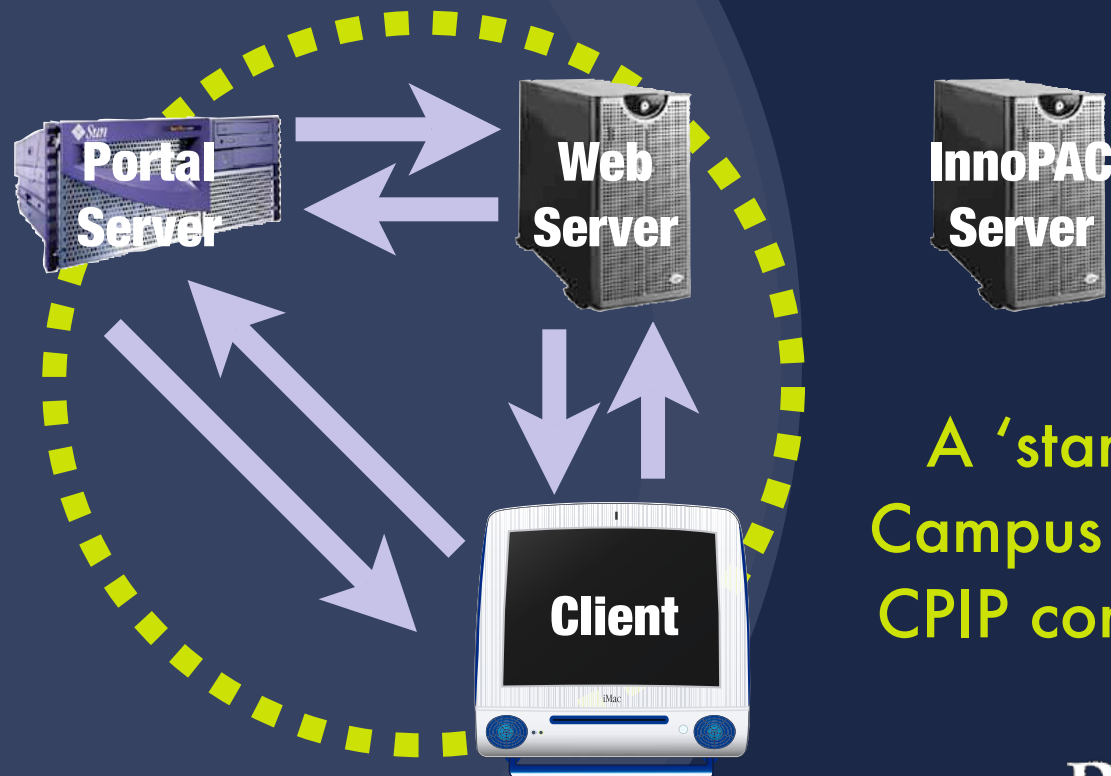
- Identity management is key...
- Single sign-on only works because all servers are “on the same page” and can identify patrons in a common (or, at least, translatable) way

○ ● ● All these servers?



The library tab

- CPIP is used to assert ID info to the webserver (CPIP = Campus Pipeline Integration Protocol)
- Used to connect to all sorts of 'external' systems, not just libraries
- Ask me about YaleCAS



A 'standard'
Campus Pipeline
CPIP connection

○ ● ● Plugging into III

The Challenge

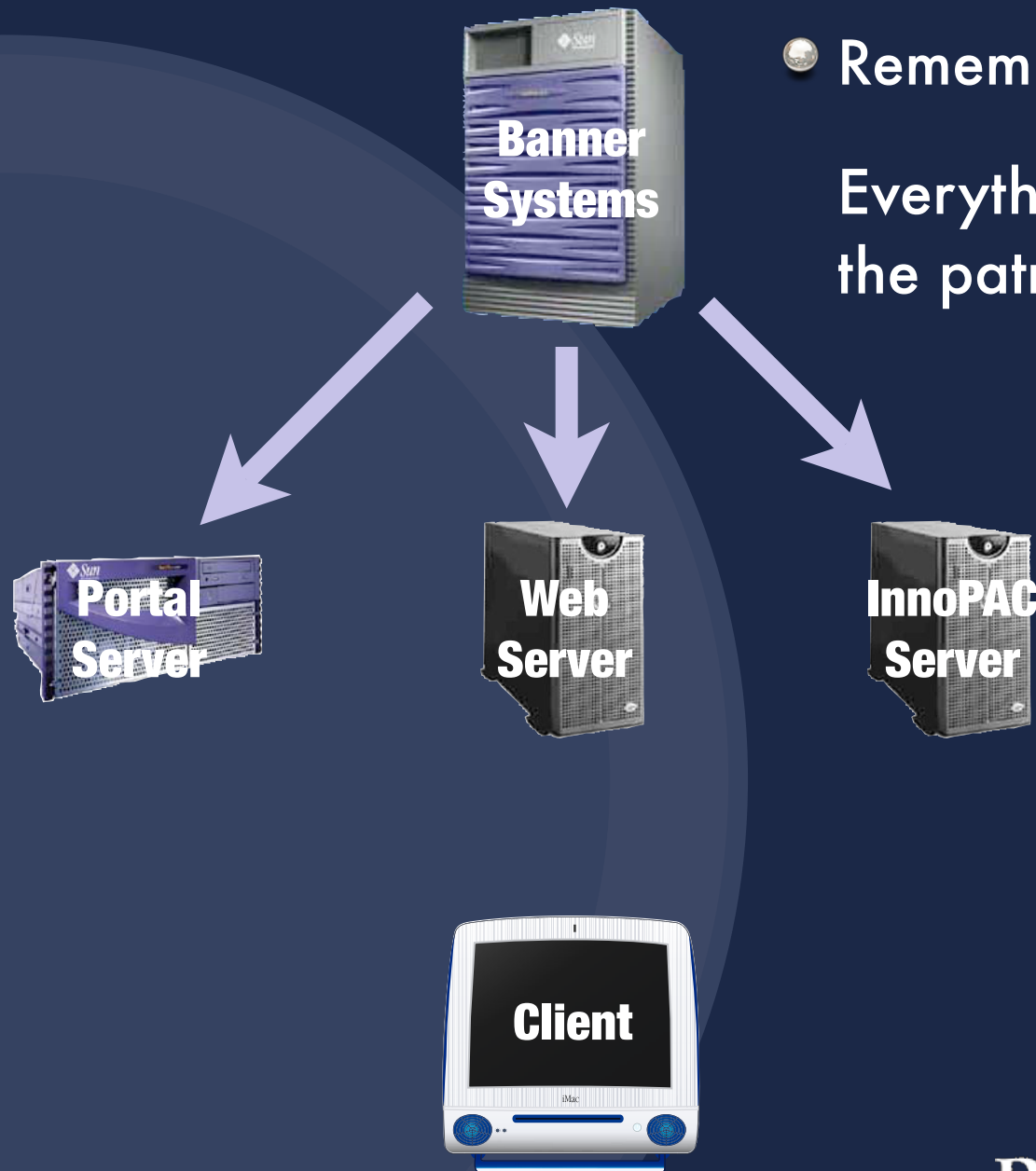
- There is no 'standardized' or supported way to assert user information on the InnoPAC server as required for single sign-on

● ● ● Plugging into III

So how does it work?

- The PSU single sign-on hack works by automating the submission of the authentication credentials
- We use III's standard patron log in process, but submit the information in a hidden form

Connecting to WAM

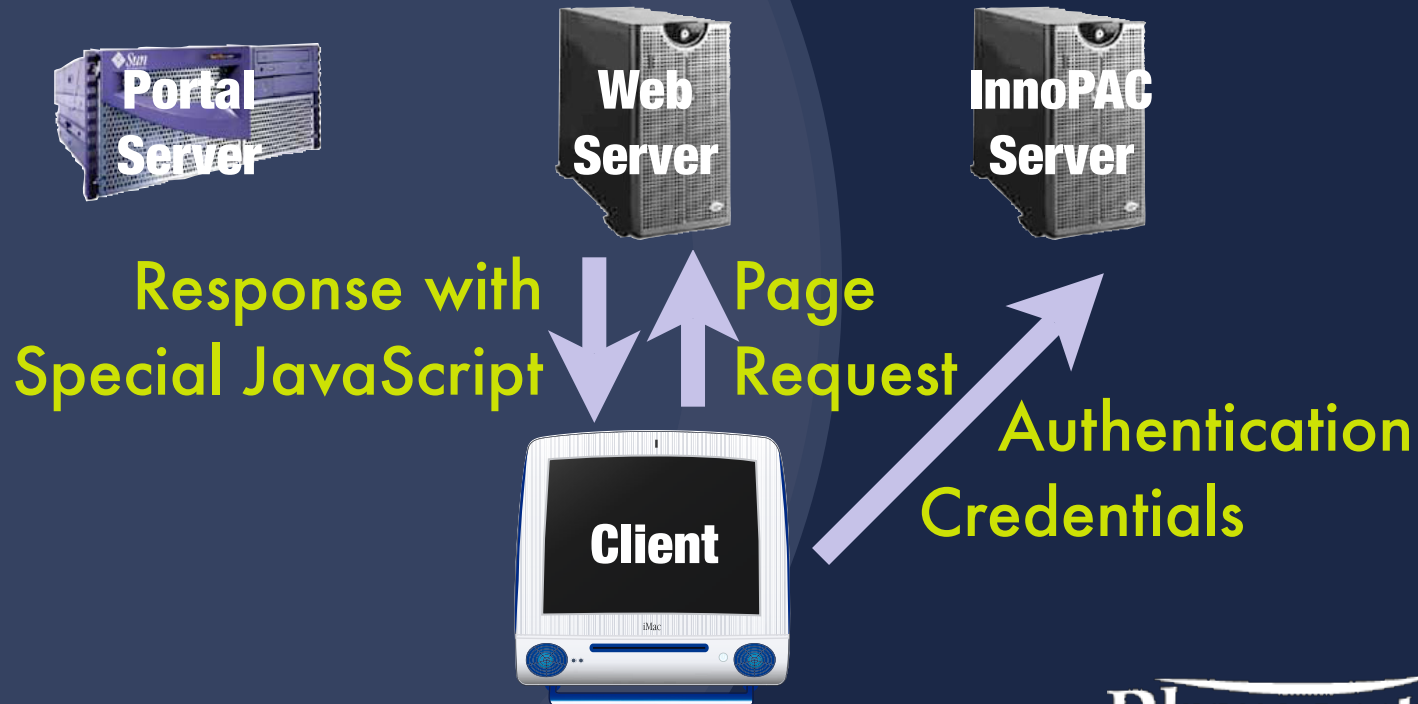


Remember:

Everything starts with the patron load

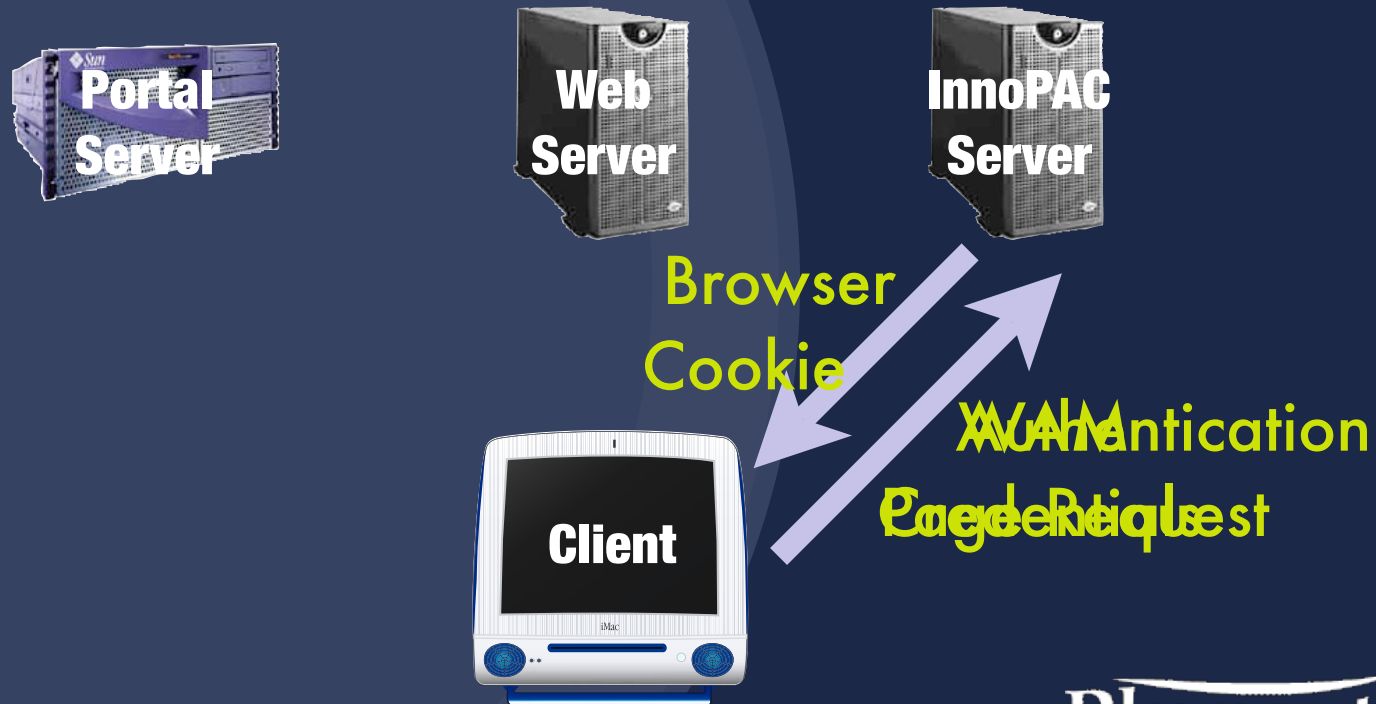
Connecting to WAM

- Client clicks on a WAM-enabled link which connects to the WS
- The WS looks up the patron's name, barcode, and PIN (the InnoPAC authentication credentials)
- The WS returns a web page with a JavaScript that causes the client browser to submit authentication credentials to the InnoPAC



Connecting to WAM

- InnoPAC accepts authentication credentials
- InnoPAC sets browser cookie to identify the client
- After a delay, the client attempts to load the WAM URL for the protected resource



Connecting to WAM

- InnoPAC receives WAM request and identifying cookie from client
- InnoPAC recognizes the valid cookie and fulfills the WAM request
- Client has no idea what magic just went on



Protected
Content

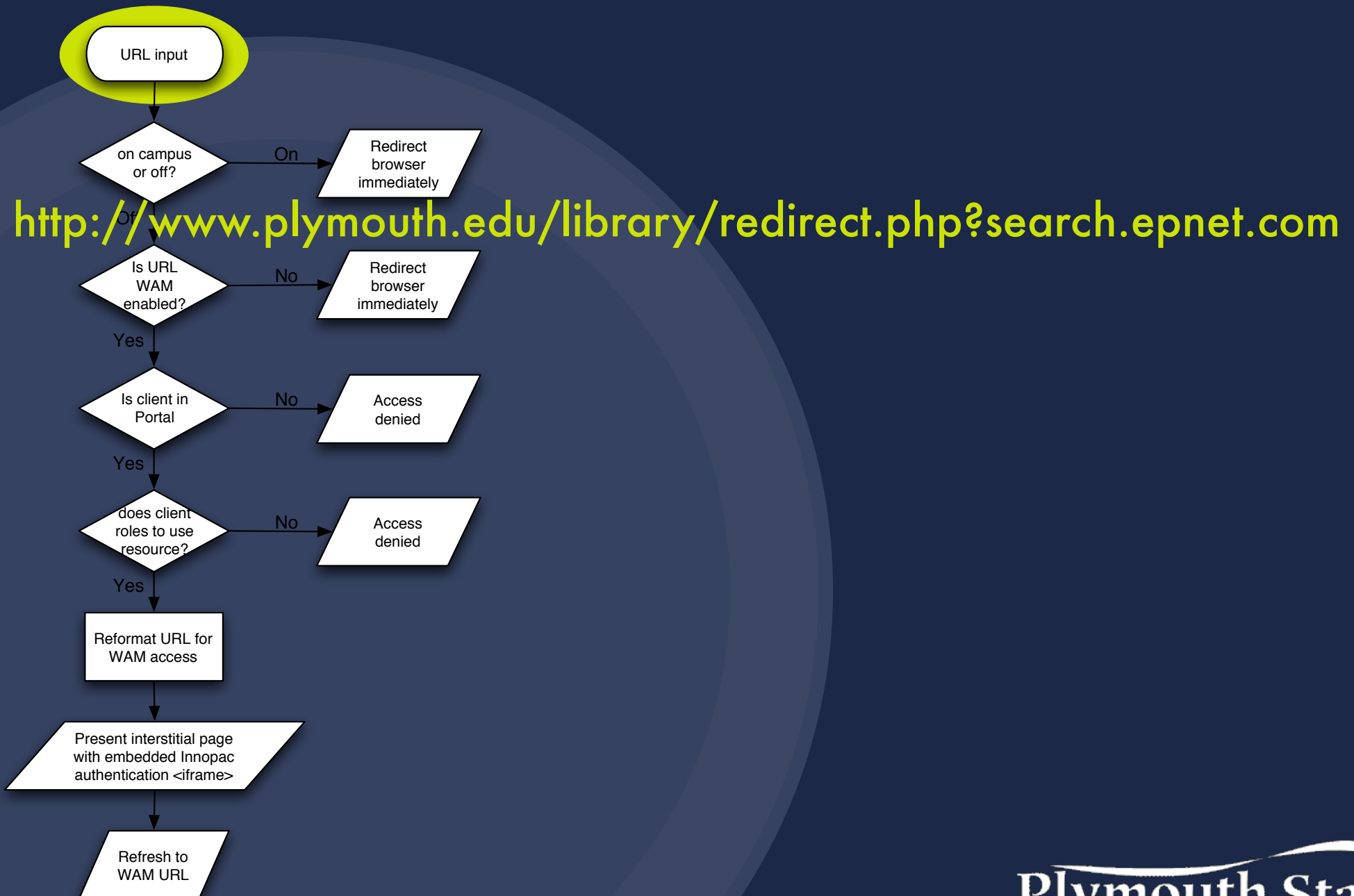
WAM
Page Request

○ ● ● Connecting to WAM

What's this redirect script?

- All off-campus links go through a redirect script running on the web server
- The redirect script makes decisions about what to do based on the destination URL, the client's network location, status in the portal, and role memberships
- Any URL from any page can be WAM enabled

How does it connect?

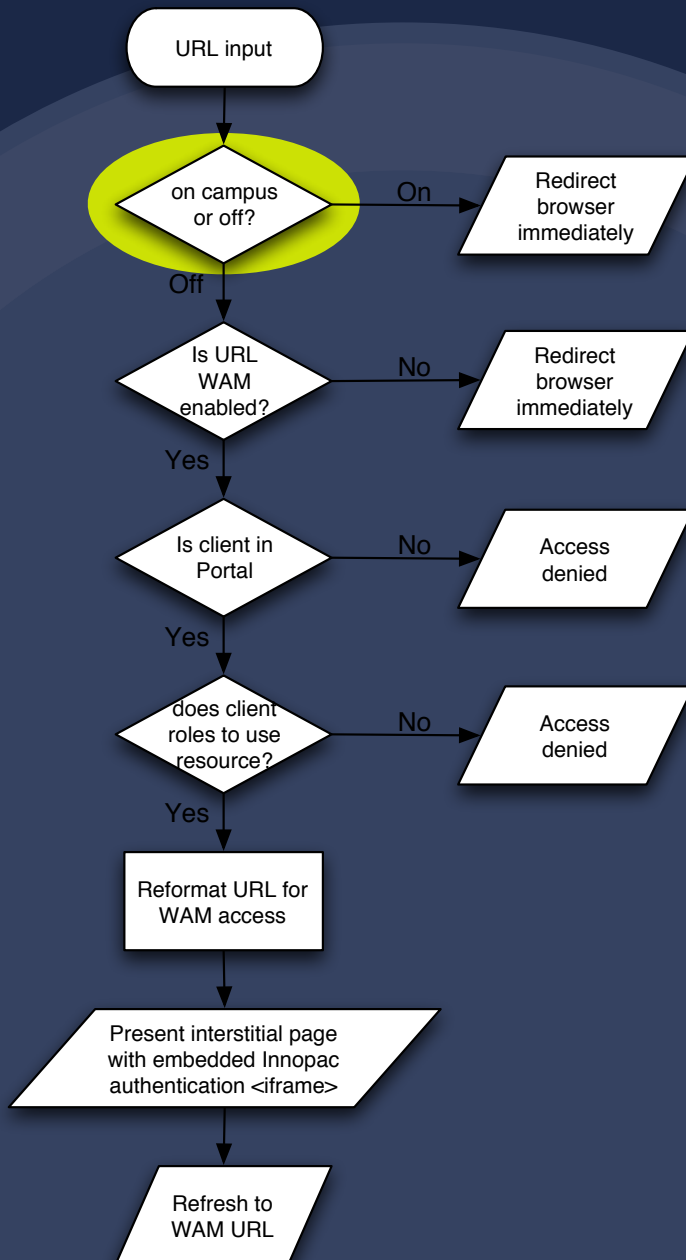


How does it connect?

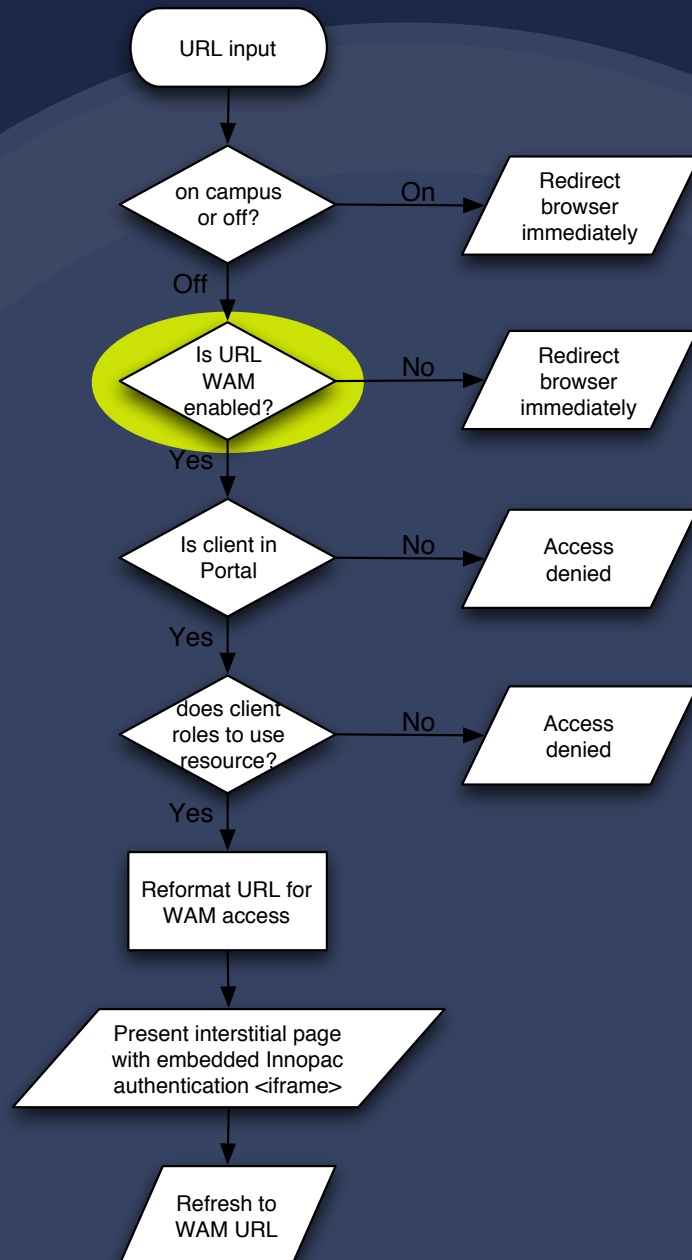
Check IP range

158.136.*.* = on campus

everything else =
off campus

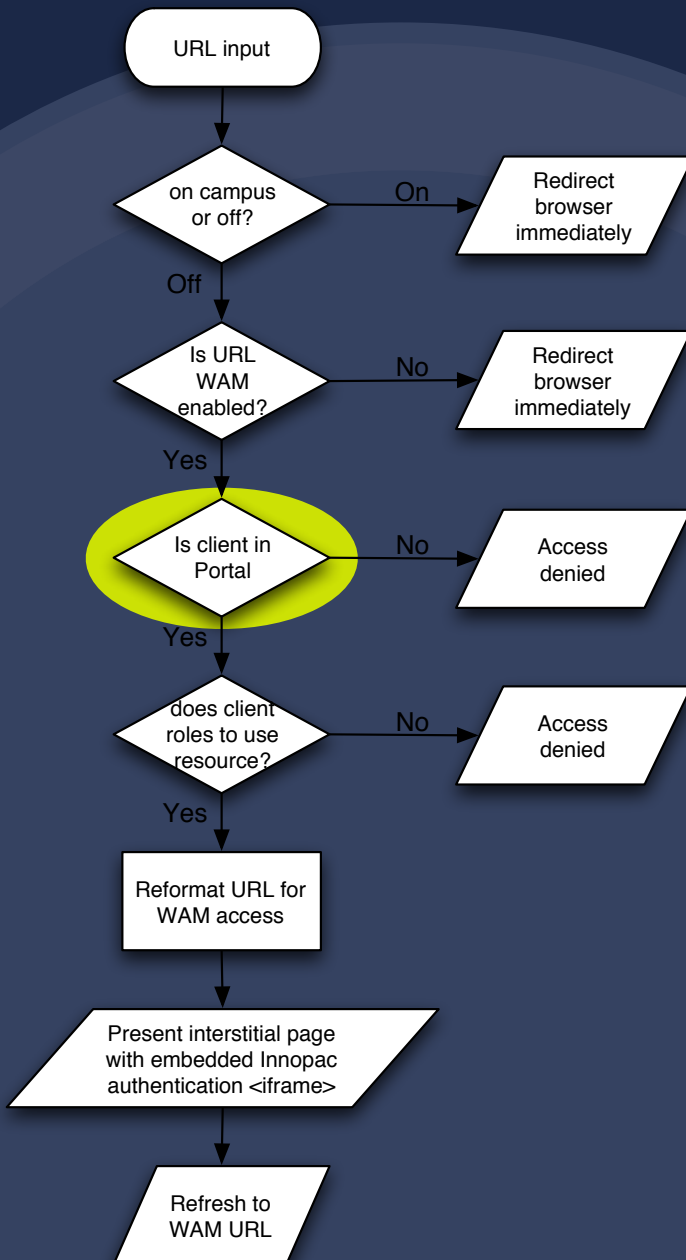


How does it connect?



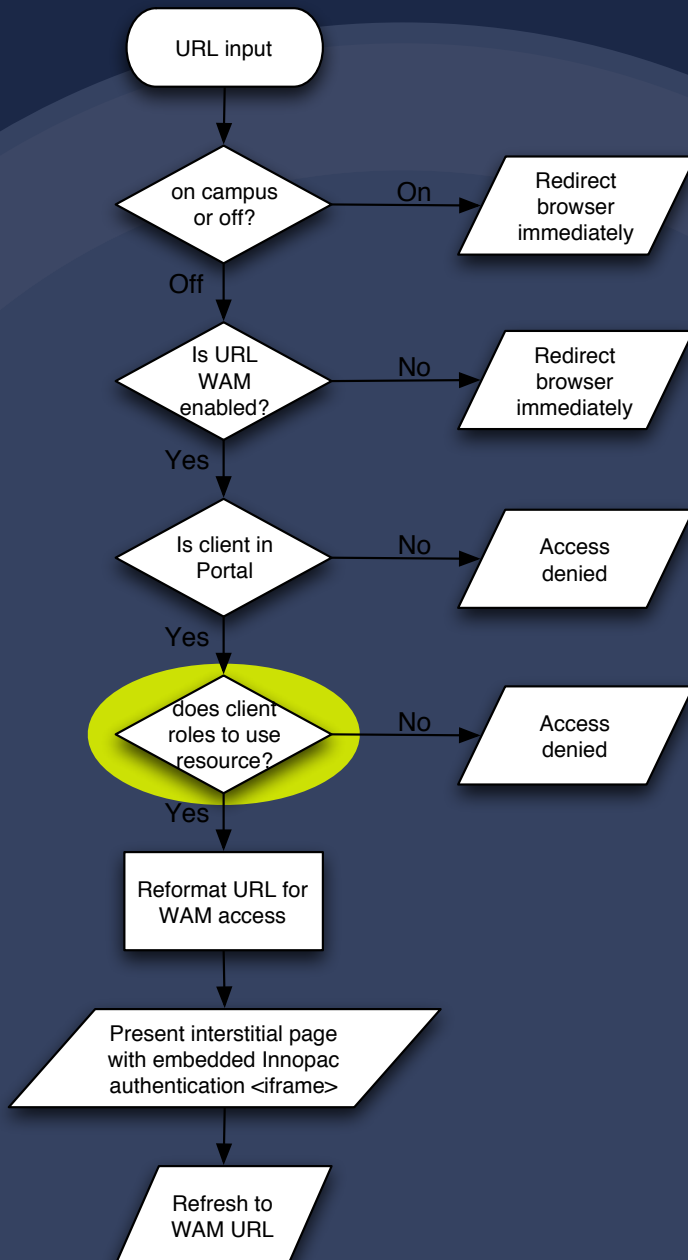
Is the destination URL in the WAM table?

How does it connect?



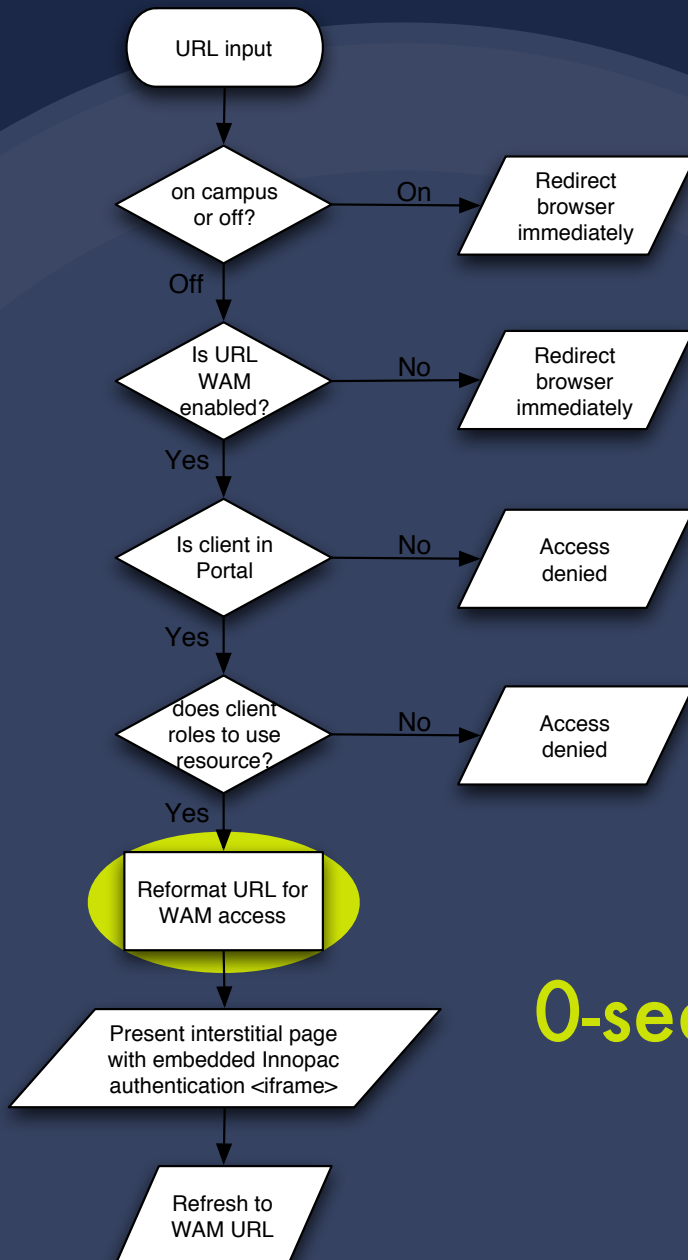
Is the client in the portal?

How does it connect?



Are client roles listed among acceptable roles for the WAM resource?

How does it connect?

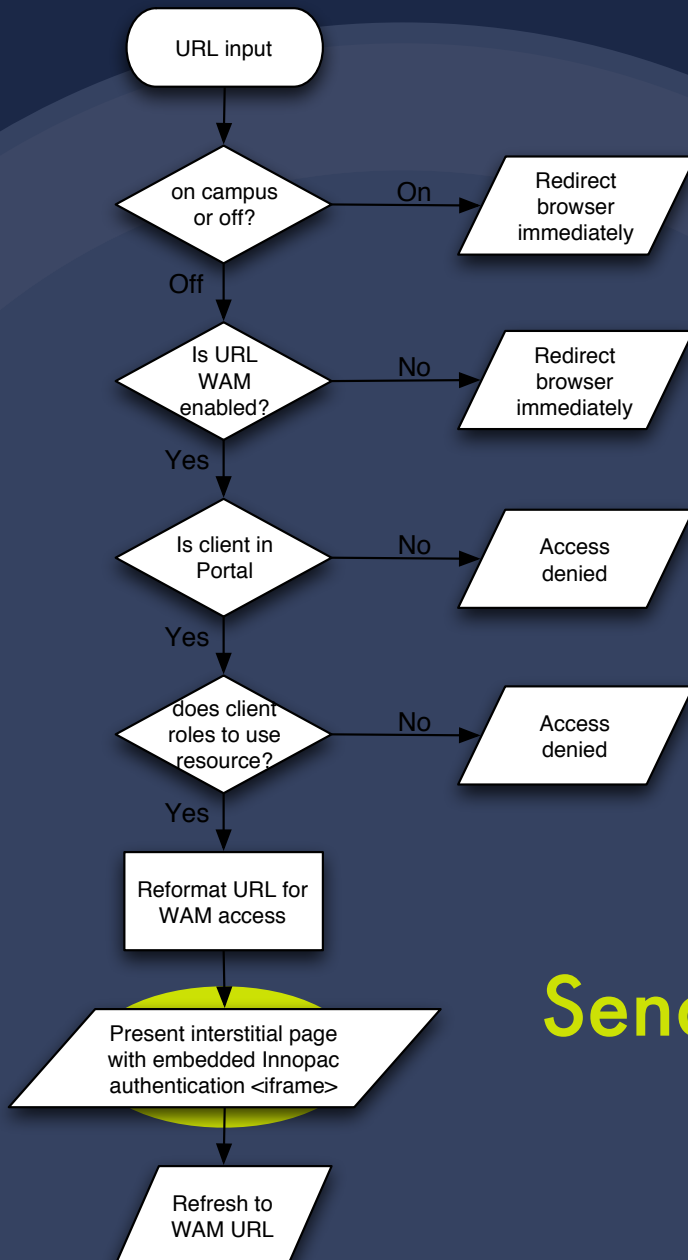


"search.epnet.com"

becomes

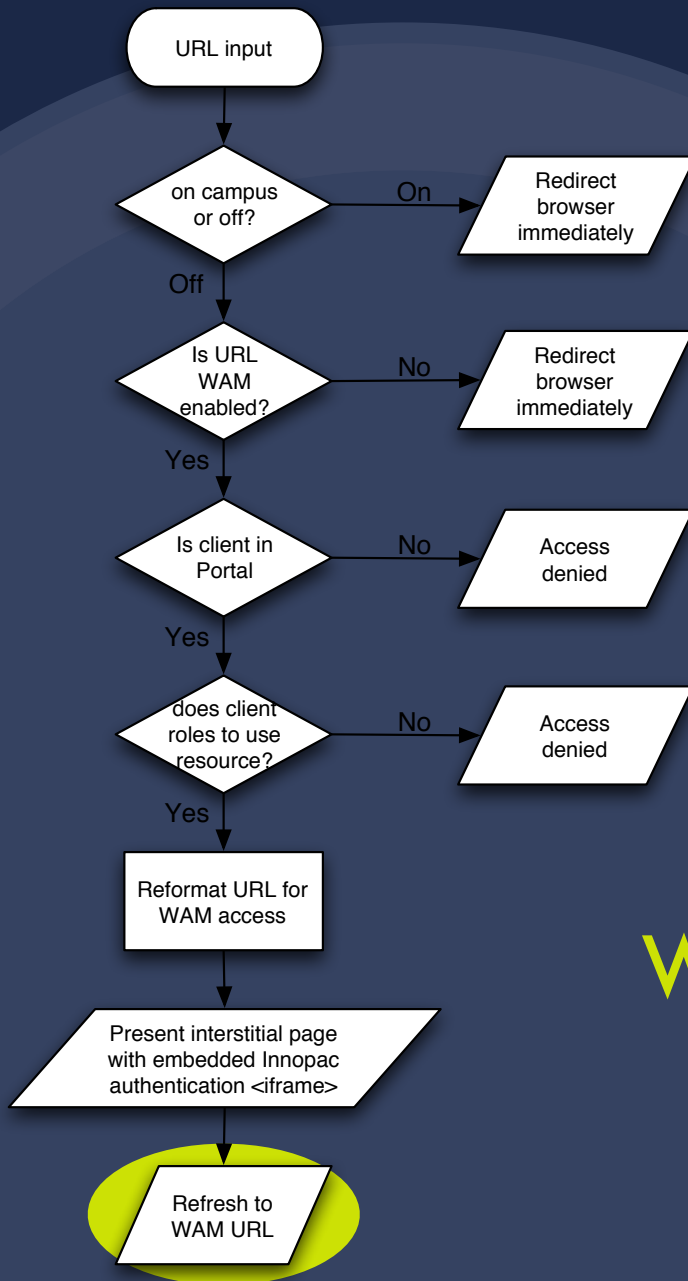
0-search.epnet.com.lola.plymouth.edu

How does it connect?



Send the authentication page to client with tricky JavaScript

How does it connect?



Wait a moment, then have client load WAM URL

Connecting to WAM

What's this JavaScript?

- It's part of a web page that contains a hidden form pre-loaded with authentication credentials
- A one line JavaScript submits the form
- The InnoPAC can't tell the difference, and sets the appropriate cookie in the client browser

● ● ● Connecting to WAM Tricking the InnoPAC

```
<form name='patform' method='post'  
  action='http://lola.plymouth.edu/patroninfo'>  
  <input name='name' type='hidden' value='Joe Pseudo'>  
  <input name='code' type='hidden' value='12345678'>  
  <input name='pin' type='hidden' value='5678'>  
</form>  
  
<script language='JavaScript'>  
  location.href='javascript:document.patform.submit()'  
</script>
```

● ● ● Plugging into III

What about LDAP

...or the Patron API?

- III's LDAP client software allows you to use authentication credentials stored on a remote server, perhaps one shared by a number of services
 - ...But, it still requires that patrons enter a password when using protected resources
- Patron API allows a remote server to check the authenticity of a PIN against the patron database or get information about a patron
 - ...But, it's basically the reverse of what's needed for single sign-on

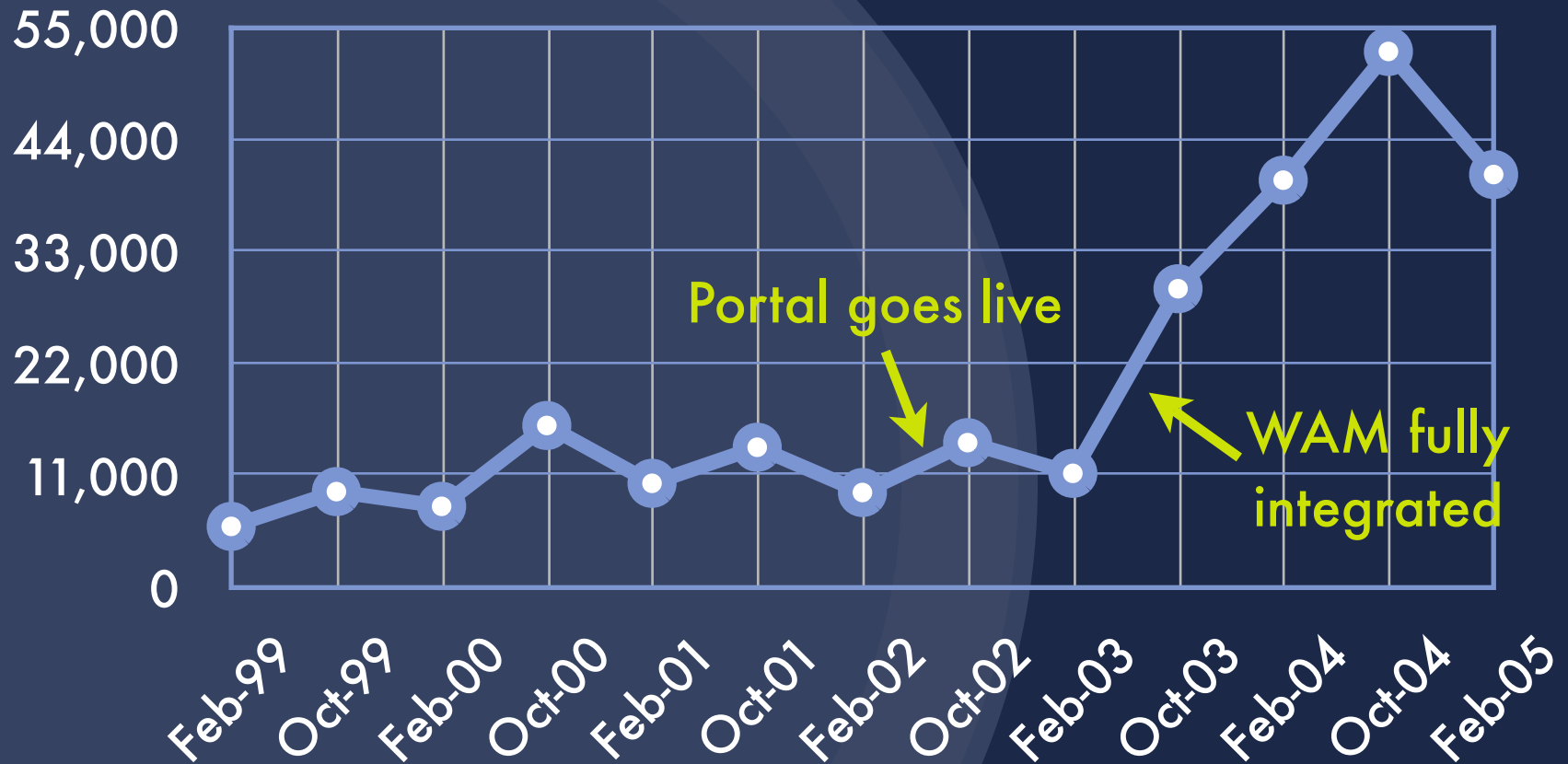


Lessons Learned

Lessons learned

Stats

Library website usage Page loads per month



○ ● ● Lessons learned

Technical considerations

- Standards for single sign-on and identity management are maturing slowly; vendor support is often limited
- Going it our own way has created a small house of cards that keeps us on our toes

○ ● ● Lessons learned

Do they like it?

- To patrons, all our integration efforts are just meeting their expectations of ease of use
- They love it, and they don't even know what a miracle it is

○ ● ● What's next?

- Integration with XML Server to offer resources based on a student's major or class schedule
- Deeper integration with WebCT to present all relevant library resources – reserves, bibliographies, research guides, recent acquisitions in the subject area – within the context of individual courses in WebCT
- Posting overdue notices and bills to “personal announcements” in the portal welcome page



Questions?

Elaine S. Allard, Systems Librarian
Casey Bisson, Library Systems
Plymouth State University
Lamson Library

<http://www.plymouth.edu/library/?portal>